

**PLEASE CHECK WWW.MOLEX.COM FOR LATEST PART INFORMATION**

**Part Number:** [0906351602](#)  
**Status:** **Active**  
**Overview:** [qf50](#)  
**Description:** 1.27mm (.050") Pitch QF-50™, Single Beam, Vertical MIL/DIN Version, 0.76µm (30µ") Gold (Au), 60 Circuits

**Documents:**

[3D Model](#) [Product Specification PS-99020-0015 \(PDF\)](#)  
[Drawing \(PDF\)](#) [RoHS Certificate of Compliance \(PDF\)](#)

**Agency Certification**

CSA LR19980  
 UL E29179

**General**

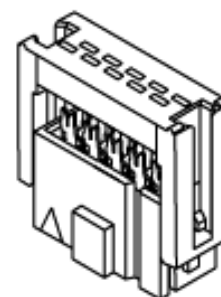
Product Family Ribbon Cable / Wire Trap Connectors  
 Series [90635](#)  
 Comments Preloaded Upper Housing  
 Component Type Housing  
 Glow-Wire Compliant No  
 Overview [qf50](#)  
 Product Name QF-50™

**Physical**

Circuits (Loaded) 60  
 Color - Resin Black  
 Durability (mating cycles max) 300  
 Entry Angle 90° Angle  
 Flammability 94V-0  
 Lock to Mating Part None  
 Material - Metal Phosphor Bronze  
 Material - Plating Mating Gold  
 Material - Plating Termination Tin  
 Material - Resin Polyester  
 Number of Rows 2  
 PCB Retention None  
 Packaging Type Tray  
 Pitch - Mating Interface (in) 0.050 In  
 Pitch - Mating Interface (mm) 1.27 mm  
 Plating min: Mating (µin) 30.4  
 Plating min: Mating (µm) 0.76  
 Plating min: Termination (µin) 39  
 Plating min: Termination (µm) 1  
 Polarized to Mating Part Yes  
 Shrouded Fully  
 Stackable No  
 Surface Mount Compatible (SMC) N/A  
 Temperature Range - Operating -25°C to +85°C  
 Termination Interface: Style IDT or Pierce  
 Wire Insulation Diameter 1.14mm (.045") max.  
 Wire Size AWG 26, 28  
 Wire/Cable Type Ribbon Cable

**Electrical**

Current - Maximum per Contact 1A  
 Voltage - Maximum 250V AC/DC



Series

image - Reference only

**EU RoHS**

**ELV and RoHS Compliant**

**REACH SVHC**

**Contains SVHC: No**

**Halogen-Free**

**Status**

**Not Reviewed**

**China RoHS**



**Need more information on product environmental compliance?**

Email [productcompliance@molex.com](mailto:productcompliance@molex.com)  
 For a multiple part number RoHS Certificate of Compliance, [click here](#)

Please visit the [Contact Us](#) section for any non-product compliance questions.

**Search Parts in this Series**

[90635Series](#)

**Mates With**

[90663](#)

**Use With**

[90170](#)

**Application Tooling | FAQ**

*Tooling specifications and manuals are found by selecting the products below. Crimp Height Specifications are then contained in the Application Tooling Specification document.*

**Global**

Description	Product #
Semi-Automatic Bench Press PB15 C/W Cable Sensor for 90635 Connectors	<a href="#">0691271150</a>
Changehead for Parallel	<a href="#">0690080250</a>

**Material Info**

**Reference - Drawing Numbers**

Product Specification  
Sales Drawing

PS-99020-0015  
SDA-90635

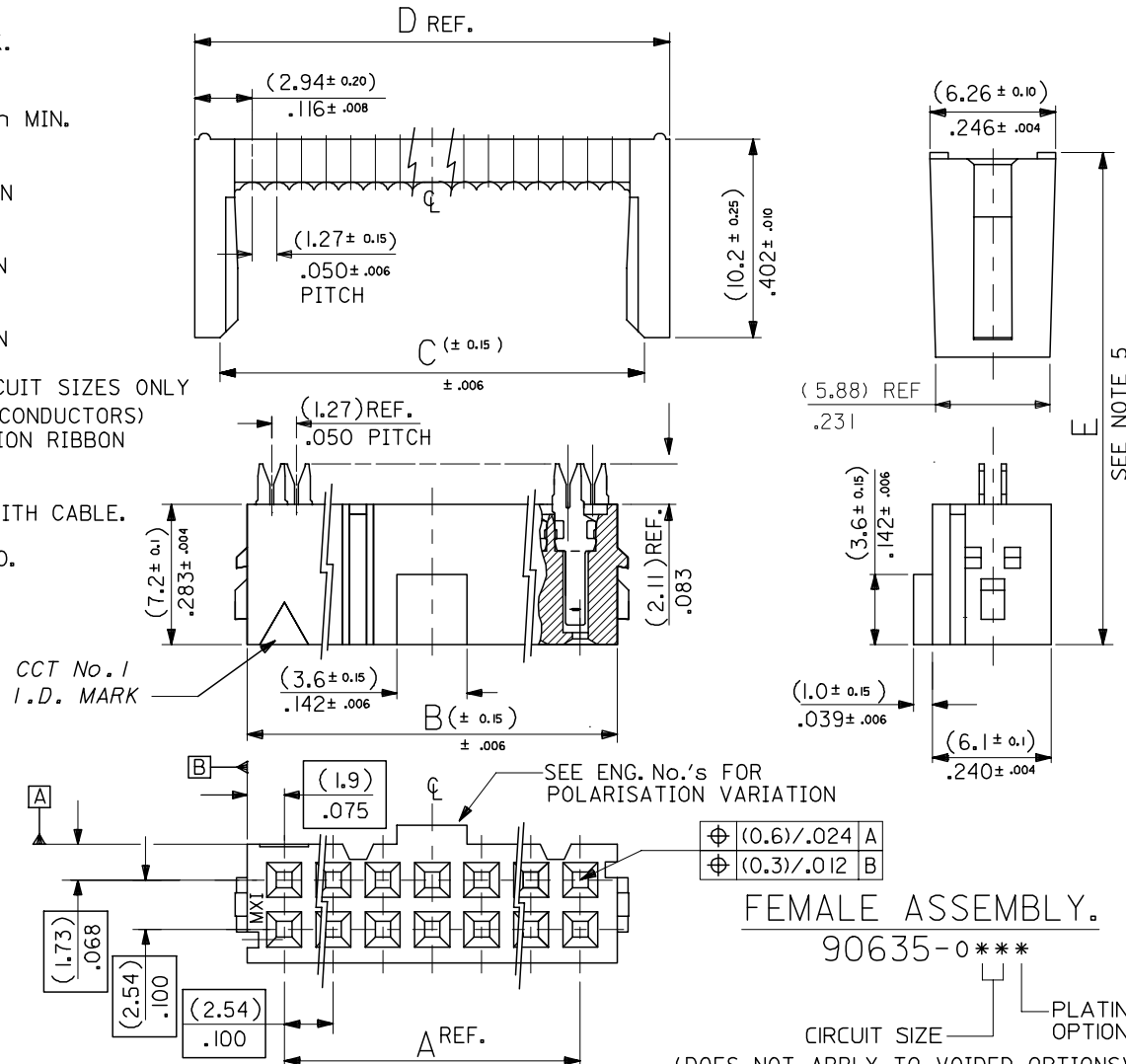
Action Handtool  
69008-0949, for  
QF-50™ and  
MX-50™ Connectors  
Arbor Press Fixture 0690200680

This document was generated on 05/31/2010

**PLEASE CHECK [WWW.MOLEX.COM](http://WWW.MOLEX.COM) FOR LATEST PART INFORMATION**

10 9 8 7 6 5 4 3 2 1

- NOTES: 1. MATERIAL:  
 HOUSING: POLYESTER, G.F. (UL 94V-0), COLOUR - BLACK.  
 TERMINAL: PHOSPHOR BRONZE.
2. TERMINAL PLATING:  
 90635-\*\*\*1 : CONTACT AREA: GOLD FLASH (0.1um)/ 4uIn MIN.  
 I.D. AREA: TIN (1um)/ 39uIn MIN. OVER  
 NICKEL (1um)/ 39uIn MIN.  
 90635-\*\*\*2 : CONTACT AREA: GOLD (0.76um)/ 30uIn MIN  
 I.D. AREA: TIN (1um)/ 39uIn MIN. OVER  
 NICKEL (1um)/ 39uIn MIN.  
 90635-\*\*\*3 : CONTACT AREA: GOLD (0.38um)/ 15uIn MIN  
 I.D. AREA: TIN (1um)/ 39uIn MIN. OVER  
 NICKEL (1um)/ 39uIn MIN.  
 90635-\*\*\*4 : CONTACT AREA: GOLD (0.51um)/ 20uIn MIN  
 I.D. AREA: TIN (1um)/ 39uIn MIN. OVER  
 NICKEL (1um)/ 39uIn MIN.. 20 & 50 CIRCUIT SIZES ONLY
3. FOR USE WITH No. 26 & 28 AWG STRANDED WIRE (7 CONDUCTORS)  
 AND No. 28 SOLID WIRE 1.14/(.045) DIA. MAX. INSULATION RIBBON  
 CABLE WITH 1.27/(.050) CENTERS.
4. MATING STRAIN RELIEF: MOLEX No. 90170.
5. DIMENSION "E" IS TOTAL HEIGHT AFTER ASSEMBLED WITH CABLE.  
 E = 10.5/(.413) REF. WITHOUT STRAIN RELIEF.  
 E = (15.2)/.598 MAX. WITH STRAIN RELIEF No. 90170.  
 (14.5)/.571 REF. WHEN COMPRESSED .
6. FOR PRODUCT SPECIFICATION, SEE PS 99020-0015.



64	90635-64*	(78.74) 3.100	(82.54) 3.250	(83.31) 3.280	(85.88) 3.381
60	90635-60*	(73.66) 2.900	(77.46) 3.050	(78.23) 3.080	(80.80) 3.181
50	90635-50*	(60.96) 2.400	(64.76) 2.55	(65.53) 2.580	(68.10) 2.681
40	90635-40*	(48.26) 1.900	(52.06) 2.050	(52.83) 2.080	(55.40) 2.181
34	90635-34*	(40.64) 1.600	(44.44) 1.750	(45.21) 1.780	(47.78) 1.881
30	90635-30*	(35.56) 1.400	(39.36) 1.550	(40.13) 1.580	(42.70) 1.681
26	90635-26*	(30.48) 1.200	(34.28) 1.350	(35.05) 1.380	(37.62) 1.481
24	90635-24*	(27.94) 1.100	(31.74) 1.250	(32.51) 1.280	(35.08) 1.381
20	90635-20*	(22.86) .900	(26.66) 1.050	(27.43) 1.080	(30.00) 1.181
16	90635-16*	(17.78) .700	(21.58) .850	(22.35) .880	(24.92) .981
14	90635-14*	(15.24) .600	(19.04) .750	(19.81) .780	(22.38) .881
10	90635-10*	(10.16) .400	(13.96) .550	(14.73) .580	(17.30) .681
NO. OF CKT.	ENG. NO.	A	B	C	D REF.

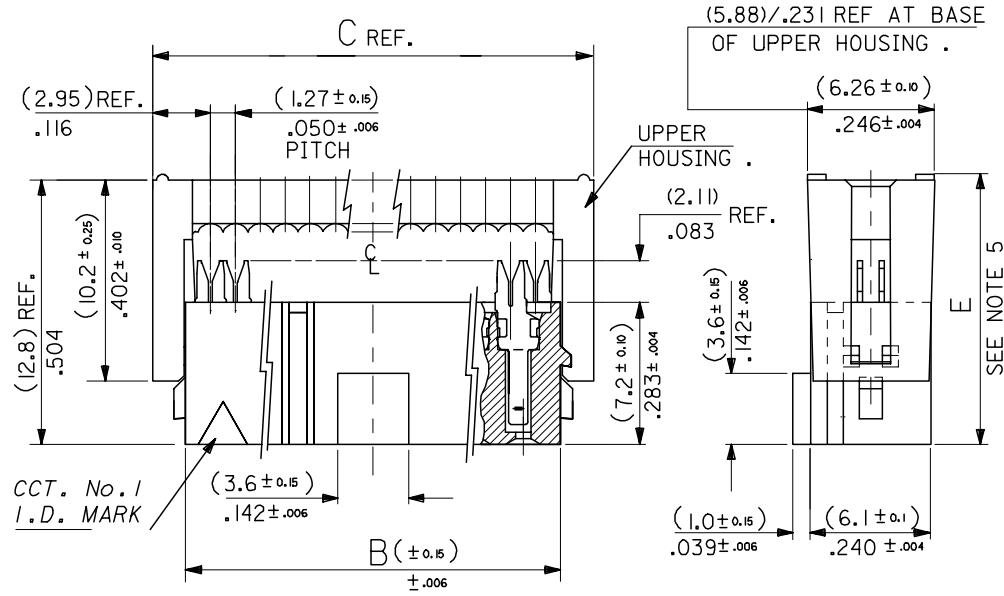
FEMALE ASSEMBLY.  
 90635-0\*\*\*

CIRCUIT SIZE PLATING OPTION  
 (DOES NOT APPLY TO VOIDED OPTIONS)

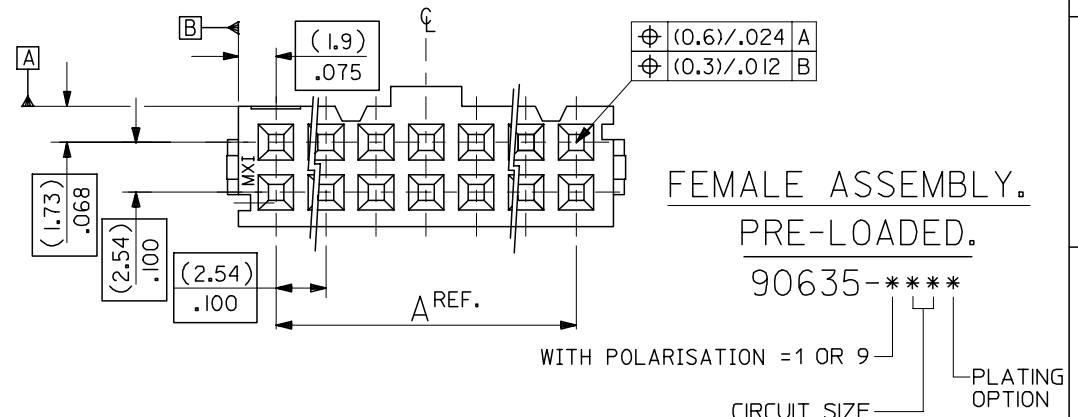
REMOVED POLARISATION EC NO: E2007-0495 DRWN:DBYRNES 2006/12/06 CHKD: 2006/12/07 APPR:EDMAMONY 2006/12/07	QUALITY SYMBOLS ▽=0 ▽=0	GENERAL TOLERANCES (UNLESS SPECIFIED)	DIMENSION STYLE MM/IN	SCALE 4:1	DESIGN UNITS METRIC	THIRD ANGLE PROJECTION
		4 PLACES ± --- ± --- 3 PLACES ± --- ± --- 2 PLACES ± --- ± --- 1 PLACE ± --- ± --- ANGULAR ± ---°	DRAWN BY POB 1990/09/25 CHECKED BY JDENNEHY 2005/08/10 APPROVED BY JDENNEHY 2005/08/10	TITLE QIK FLECS SINGLE BEAM FEMALE ASSEMBLY		
		DRAFT WHERE APPLICABLE MUST REMAIN WITHIN DIMENSIONS	MATERIAL NO. SEE CHART	MOLEX MOLEX INCORPORATED	DOCUMENT NO. SDA-90635	SHEET NO. 1 OF 3
			THIS DRAWING CONTAINS INFORMATION THAT IS PROPRIETARY TO MOLEX INCORPORATED AND SHOULD NOT BE USED WITHOUT WRITTEN PERMISSION			

9 8 7 6 5 4 3 2 1

- NOTES: 1. MATERIAL:  
HOUSING: POLYESTER, G.F. (UL 94V-0), COLOUR - BLACK.  
TERMINAL: PHOSPHOR BRONZE.
2. TERMINAL PLATING:  
90635-\*\*\*1 : CONTACT AREA: GOLD FLASH (0.1um)/ 4uin MIN.  
I.D. AREA: TIN (1um)/ 39uin MIN. OVER  
NICKEL (1um)/ 39uin MIN.  
90635-\*\*\*2 : CONTACT AREA: GOLD (0.76um)/ 30uin MIN  
I.D. AREA: TIN (1um)/ 39uin MIN. OVER  
NICKEL (1um)/ 39uin MIN.  
90635-\*\*\*3 : CONTACT AREA: GOLD (0.38um)/ 15uin MIN  
I.D. AREA: TIN (1um)/ 39uin MIN. OVER  
NICKEL (1um)/ 39uin MIN.  
90635-\*\*\*4 : CONTACT AREA: GOLD (0.51um)/ 20uin MIN  
I.D. AREA: TIN (1um)/ 39uin MIN. OVER  
NICKEL (1um)/ 39uin MIN.
3. FOR USE WITH No. 26 & 28 AWG STRANDED WIRE (7 CONDUCTORS)  
AND No. 28 SOLID WIRE 1.14/(.045) DIA. MAX. INSULATION RIBBON  
CABLE WITH 1.27/(.050) CENTERS.
4. MATING STRAIN RELIEF: MOLEX No. 90170.
5. DIMENSION "E" IS TOTAL HEIGHT AFTER ASSEMBLED WITH CABLE.  
E = 10.5/(.413) REF. WITHOUT STRAIN RELIEF.  
E = (15.2)/.598 MAX. WITH STRAIN RELIEF No. 90170.  
(14.5)/.571 REF. WHEN COMPRESSED .
6. FOR PRODUCT SPECIFICATION, SEE PS 99020-0015.



64	90635-*64*	(78.74) 3.100	(82.54) 3.250	(85.88) 3.381
60	90635-*60*	(73.66) 2.900	(77.46) 3.050	(80.80) 3.181
50	90635-*50*	(60.96) 2.400	(64.76) 2.55	(68.10) 2.681
40	90635-*40*	(48.26) 1.900	(52.06) 2.050	(55.40) 2.181
	90635-9402 (CUSTOMER SPECIFIC)			
34	90635-*34*	(40.64) 1.600	(44.44) 1.750	(47.78) 1.881
30	90635-*30*	(35.56) 1.400	(39.36) 1.550	(42.70) 1.681
26	90635-*26*	(30.48) 1.200	(34.28) 1.350	(37.62) 1.481
24	90635-*24*	(27.94) 1.100	(31.74) 1.250	(35.08) 1.381
20	90635-*20*	(22.86) .900	(26.66) 1.050	(30.00) 1.181
16	90635-*16*	(17.78) .700	(21.58) .850	(24.92) .981
14	90635-*14*	(15.24) .600	(19.04) .750	(22.38) .881
10	90635-*10*	(10.16) .400	(13.96) .550	(17.30) .681
No. OF CKT.	ENG. NO.	A	B	C



REMOVED OPTION EC NO: E2007-0495 2006/12/06 DRWN:DBYRNES 2006/12/07 CHKD: 2006/12/07 APPR:EOHANY 2006/12/07	QUALITY SYMBOLS	GENERAL TOLERANCES (UNLESS SPECIFIED)	DIMENSION STYLE	SCALE	DESIGN UNITS	THIRD ANGLE PROJECTION	
	▽=0 ∇=0	mm INCH	MM/IN	4:1	METRIC		
		4 PLACES ± --- ± --- 3 PLACES ± --- ± --- 2 PLACES ± --- ± --- 1 PLACE ± --- ± --- ANGULAR ± ---°	DRAWN BY DATE POB 1990/09/25 CHECKED BY DATE JDENNEHY 2005/08/10 APPROVED BY DATE JDENNEHY 2005/08/10	TITLE	QIK FLECS SINGLE BEAM FEMALE ASSEMBLY, PRE-LOADED		
	DRAFT WHERE APPLICABLE MUST REMAIN WITHIN DIMENSIONS	SEE CHART	MATERIAL NO.	DOCUMENT NO.	MOLEX INCORPORATED		
REV			SIZE A3	THIS DRAWING CONTAINS INFORMATION THAT IS PROPRIETARY TO MOLEX INCORPORATED AND SHOULD NOT BE USED WITHOUT WRITTEN PERMISSION			
						SHEET NO. 2 OF 3	